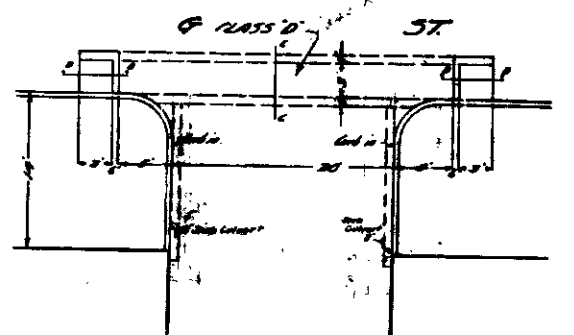
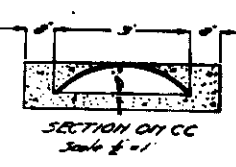
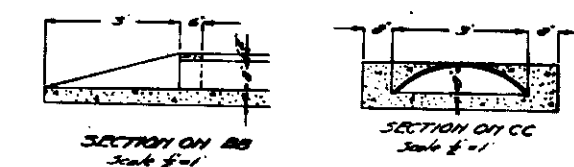
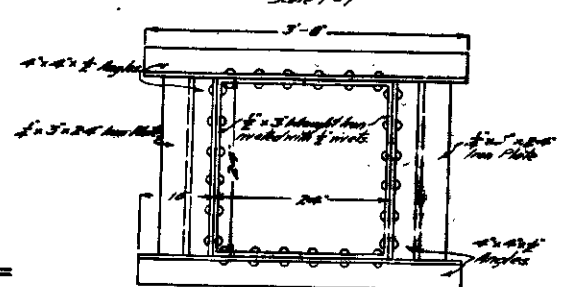
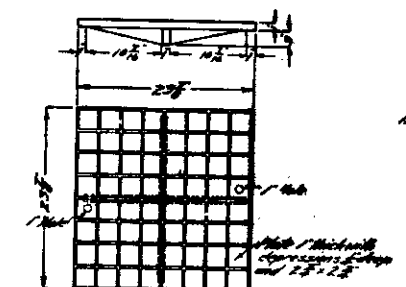
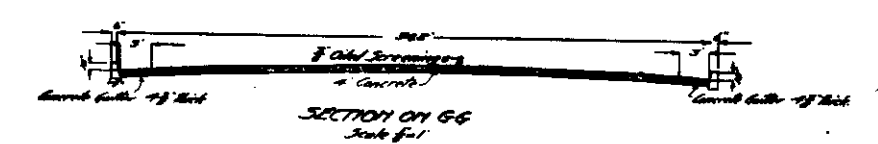


PLAN OF CULVERTS AT SECOND & STS
Scale 1/2"

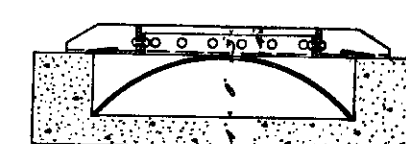
Note: All work to be finished prior to opening of street to traffic. All work to be done in accordance with the latest specifications of the U.S. Standard Specifications for Highway Construction.



PLAN OF CULVERTS AT 'A' & 'B'
Scale 1/2"



PLAN OF G.G. HOLE FRAME
Scale 1/2"



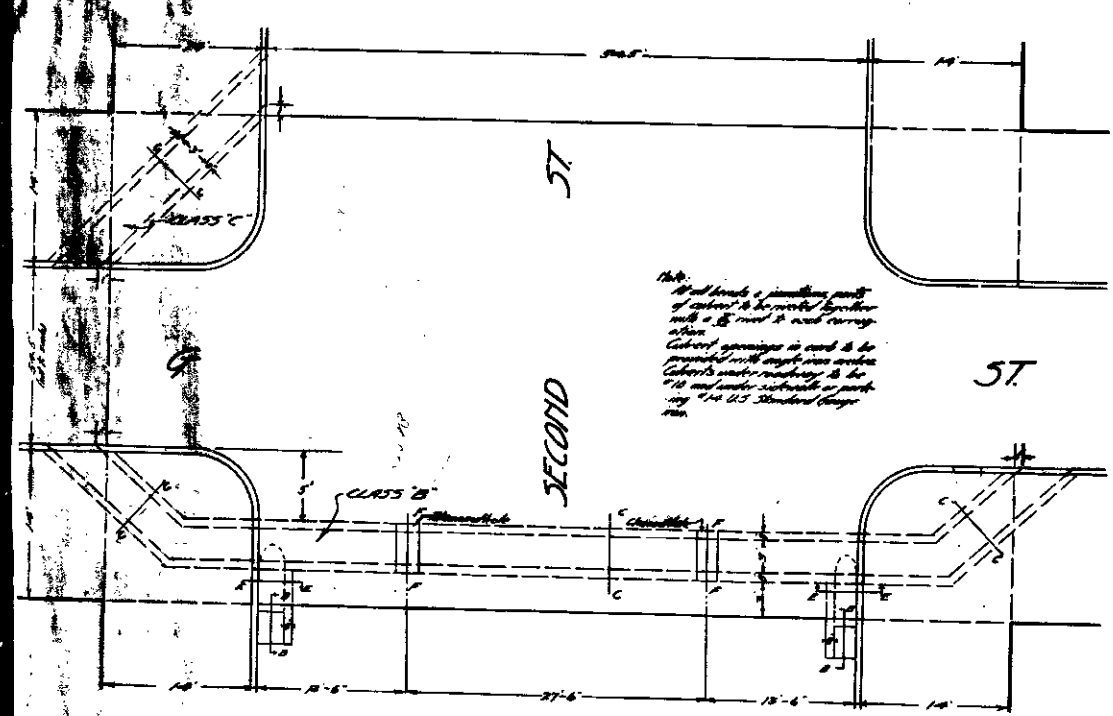
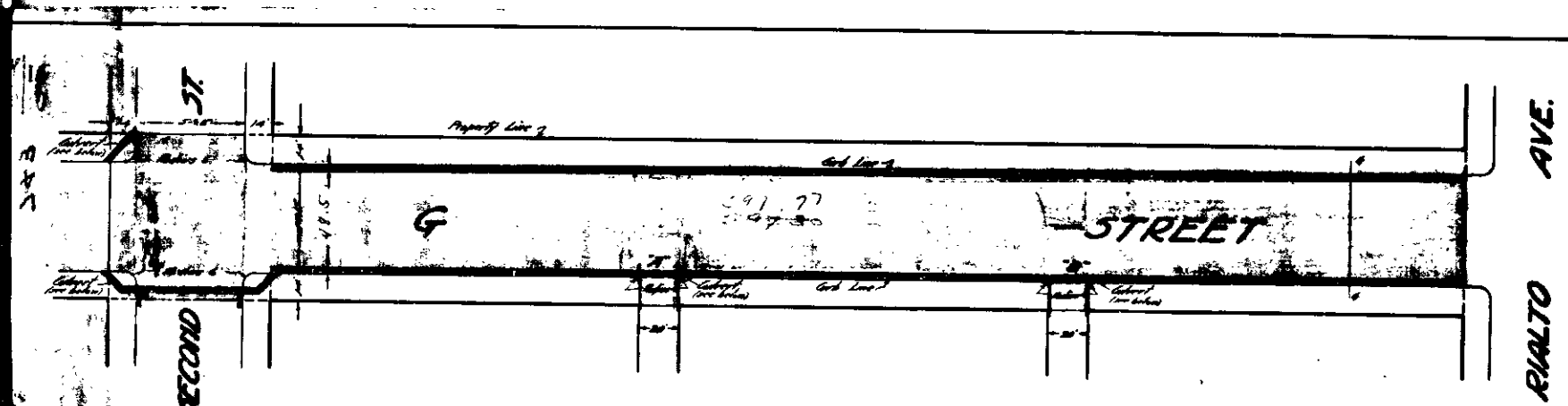
SECTION ON FF SHOWING G.G. HOLE & G.G. HOLE FRAME
Scale 1/2"

- ABBREVIATIONS
- means feet or feet
 - means inch or inches
 - means square
 - means by
 - means against
 - means through
 - means over
 - means finished
 - means clear
 - means clear out

Things to be done, noted, shown, etc. should be to be constructed, shown, etc. should be to be constructed, shown, etc.

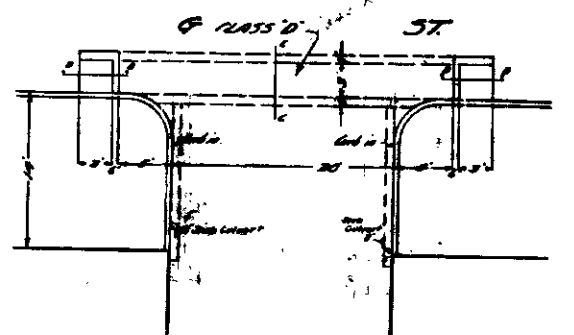
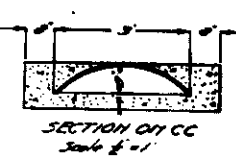
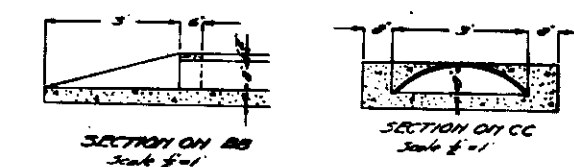
1288
PLANS
IMPROVEMENT
G STREET
RIALTO AVE. - SECOND ST.
SAN BERNARDINO, CAL.
S.A. Smith, Civil Engineer, May 1, 1914

FILE
MAY 11 1914
F.O.

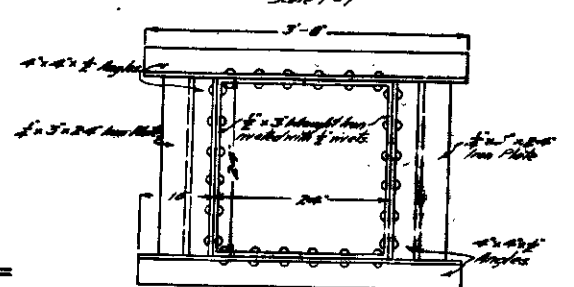
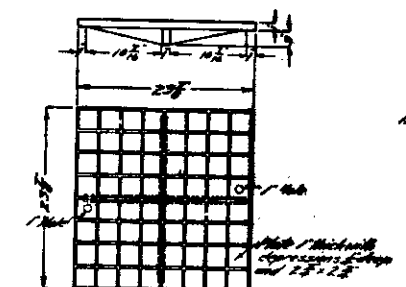
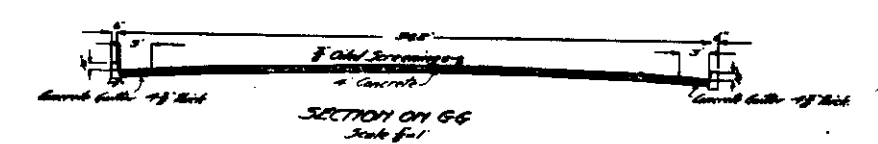


PLAN OF CULVERTS AT SECOND & STS
Scale 1/2"

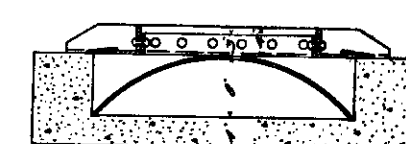
Note: All work to be finished prior to opening of street to traffic. All work to be done in accordance with the latest specifications of the U.S. Standard Specifications for Highway Construction.



PLAN OF CULVERTS AT 'A' & 'B'
Scale 1/2"



PLAN OF G.G. HOLE FRAME
Scale 1/2"



SECTION ON FF SHOWING G.G. HOLE & G.G. HOLE FRAME
Scale 1/2"

- ABBREVIATIONS
- means feet or feet
 - means inch or inches
 - means square
 - means by
 - means against
 - means through
 - means over
 - means finished
 - means clear
 - means clear out

Things to be done, noted, shown, etc. should be to be constructed, shown, etc. should be to be constructed, shown, etc.

1288
PLANS
IMPROVEMENT
G STREET
RIALTO AVE. - SECOND ST.
SAN BERNARDINO, CAL.
S.A. Smith, Civil Engineer, May 1, 1914

FILE
MAY 11 1914
F.O.